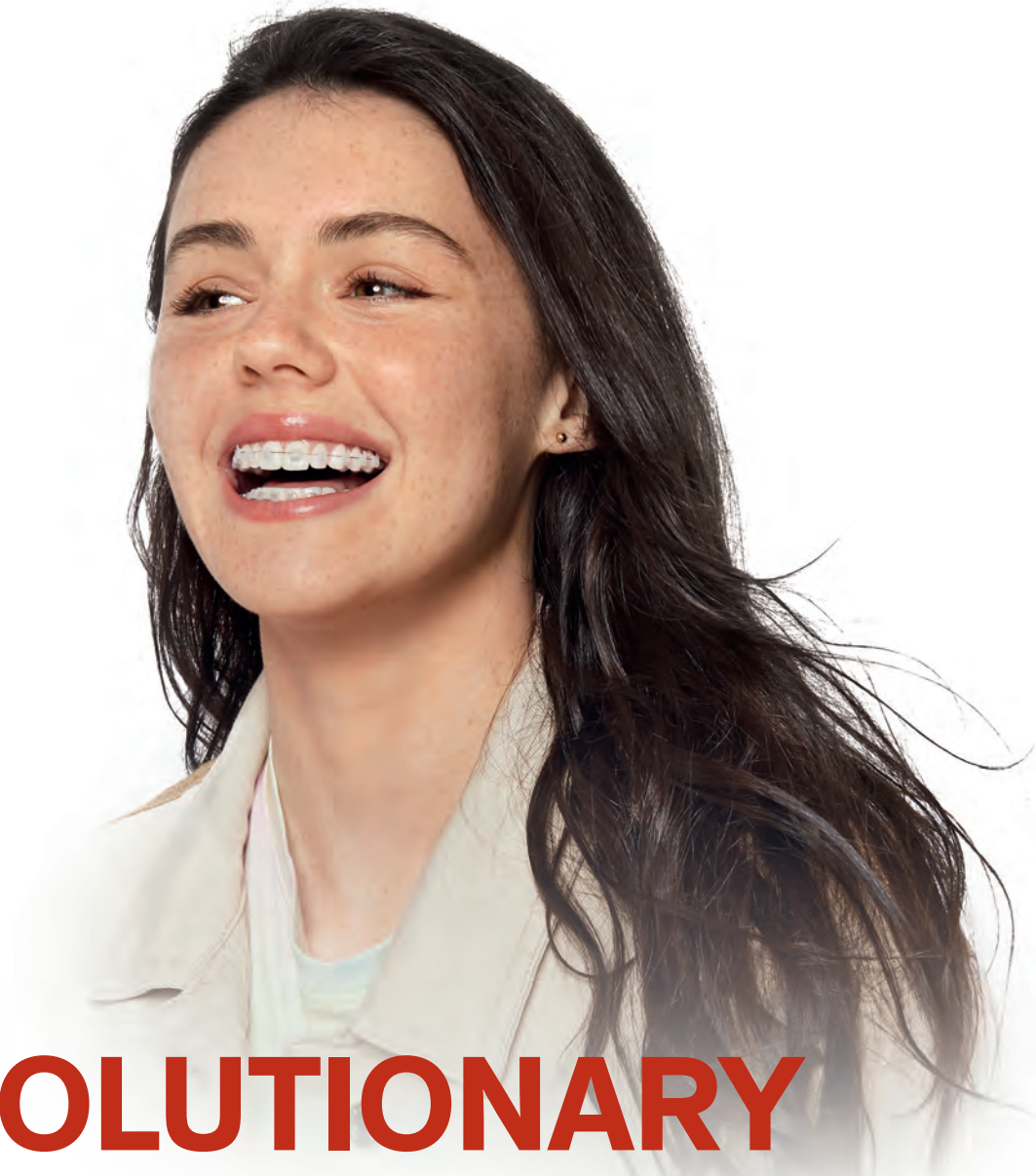


CARRIERE™  
M-SERIES™ WIRES

M-SERIES™  
EXPANSION WIRES



# REVOLUTIONARY 3-WIRE SEQUENCE

PLUS ALL-NEW EXPANSION WIRES!

A simplified wire progression  
protocol used in conjunction  
with the *SAGITTAL FIRST*™  
Treatment Philosophy

 HENRY SCHEIN®  
ORTHODONTICS

*The New Movement In Orthodontics™*

# CARRIERE® M-SERIES™ WIRES

## A REVOLUTIONARY 3-WIRE SEQUENCE

The *Carriere® M-Series™* Wires, including .015 *Cu™ Nitanium®* Wire and the innovative 3-Wire Sequence, are designed to:

- Enable a simplified wire progression protocol
- Reduce the number of wires used
- Finish cases in about 12 months

Integral to the *SAGITTAL FIRST* Treatment Philosophy is the use of the *Carriere MOTION 3D™* Appliance to correct AP discrepancies and stimulate initial tooth movement. This fosters easier transitions into larger wires earlier in treatment, less time in braces, and shorter overall treatment times.



## M-SERIES™ EXPANSION WIRES

### ALL-NEW M-SERIES EXPANSION WIRES

The patent pending *M-Series* Expansion Wires are pre-manufactured Copper *Nitanium* wires in pre-formed Wide and Narrow archwire shapes, ideal to treat expansion, crossbite, and Brodie bite malocclusions. What makes this series of wires most unique is that it offers all of the benefits of a *Cu Nitanium* wire and has a built-in unique shape to expand or constrict the arch. Now it is possible to address the expansion needs earlier in treatment with the *M-Series* Expansion Wires.



#### Designed to:

- Eliminate the need for manual wire shaping, resulting in more consistency, more accuracy, and time savings
- Simplify archwire sequencing in conjunction with the *M-Series* Wire Sequence
- Decrease the number of wires used
- Reduce the need for laboratory fabricated appliances, i.e. traditional expanders



#### NARROW Archwire Shape

Constricted posterior section prevents passive compensatory expansion of the opposing dentition during the course of crossbite or Brodie bite correction.

#### WIDE Archwire Shape

Flattened anterior section across the centrals and laterals prevents constriction of the canines when the wire is activated into the malocclusion.

# M-SERIES WIRES WITH SAGITTAL FIRST

3–6 MONTHS

MOTION 3D APPLIANCE



8–10 MONTHS

M-SERIES WIRES / SLX® 3D SELF-LIGATING BRACKETS



**M1**  
.015 Cu Nitium 27°

**M2 / M-EXP 2**  
.020 × .020 Cu Nitium 35°

**M3**  
.019 × .025 Beta Titanium

# M-SERIES WIRES PROGRESSION PROTOCOLS



	BEGINNING	INTERMEDIATE		FINISHING	
		OPTIONAL		OPTIONAL	
	Beginning Leveling, Aligning & Rotation	For Stubborn Rotations Only	Arch Development Start Expansion	Continue Expansion (Ceramic SLB Only)	Detailing & Finishing
<b>STANDARD PASSIVE</b> Self-Ligating Expansion Wire Sequence		<b>M-ONE.FIVE WIRE</b> .018 Cu Niti 27°	<b>M-TWO WIRE</b> .020 × .020 Cu Niti 35°	<b>M-TWO.FIVE WIRE</b> .019 × .025 Cu Niti 35°	
→	<b>M-ONE WIRE</b> .015 Cu Niti 27°				
<b>OVER EXPRESSED PASSIVE</b> Self-Ligating Expansion Wire Sequence		<b>M-EXP ONE.FIVE WIRE</b> .014 × .025 Cu Niti 27°	<b>M-EXP TWO WIRE</b> .020 × .020 Cu Niti 35°	<b>M-EXP TWO.FIVE WIRE</b> .019 × .025 Cu Niti 27°	<b>M-THREE WIRE</b> .019 × .025 Beta Titanium or .019 × .025 Stainless Steel

## M-SERIES WIRE SEQUENCE - FOR METAL BRACKET SYSTEMS

	WIRE NAME	DESCRIPTION	OBJECTIVE	TIME IN TREATMENT	NUMBER OF APPTS. (5-6 WEEK INTERVALS)	ITEM NUMBER
1	<b>M-ONE</b>	.015 Cu Nitium 27° with EZ Stops™ Delivery System	Begin leveling, aligning, and rotations	5-6 weeks	1 appointment	103-M1
2	<b>M-TWO</b>	.020 × .020 Cu Nitium 35° with EZ Stops Delivery System	Complete leveling, aligning, and elimination of rotations. Arch development is initiated, 3 dimensional control of wire will begin initial torque control	6-18 weeks, based on complexity and clinical judgement	2-3 appointments	103-M2
3	<b>M-THREE BETA</b>	.019 × .025 Beta Titanium	Detailing and finishing	8-12 weeks	2-3 appointments	103-M3B
<b>OPTIONAL M-SERIES WIRES</b>						
	<b>M-ONE.FIVE</b>	.018 Cu Nitium 27° with EZ Stops Delivery System	Used in small number of cases for stubborn rotations prior to placing M-TWO wire	4-6 weeks	1-2 appointments	103-M1.5
	<b>M-TWO.FIVE</b>	.019 × .025 Cu Nitium 35° with EZ Stops Delivery System	For ceramic bracket, for final bracket alignment prior to M-THREE BETA wire	3-4 weeks	1 appointment	103-M2.5
	<b>M-THREE STEEL</b>	.019 × .025 Stainless Steel	Surgical stabilization wire placed prior to surgery and/or to complete expansion in stubborn cases; used instead of M-THREE BETA	8-12 weeks	2-3 appointments	103-M3S

All M-Series Wires are available in the D-LX™ Archform and are packaged in single pouches in packs of 10.

## M-SERIES EXPANSION WIRE SEQUENCE WITH M-SERIES WIRES

	WIRE NAME	DESCRIPTION	OBJECTIVE	TIME IN TREATMENT	NUMBER OF APPTS. (5-6 WEEK INTERVALS)	ITEM NUMBER
1	<b>M-ONE</b>	.015 Cu Nitium 27° with EZ Stops Delivery System	Begin leveling, aligning, and rotations	5-6 weeks	1 appointment	103-M1
2	<b>M-Expansion TWO Narrow*</b>	.020 × .020 M-Expansion Cu Nitium 35° Narrow Archwire w/stops	Complete leveling, aligning, and elimination of rotations. Arch development is initiated, 3 dimensional control of wire will begin initial torque control; simultaneously correcting crossbites or enhancing arch development	6-18 weeks, based on complexity and clinical judgement**	2-3 appointments	103-MEXP2N
	<b>M-Expansion TWO Wide*</b>	.020 × .020 M-Expansion Cu Nitium 35° Wide Archwire w/stops				103-MEXP2W
3	<b>M-THREE BETA</b>	.019 × .025 Beta Titanium	Detailing and finishing	8-12 weeks	2-3 appointments	103-M3B
<b>OPTIONAL M-SERIES EXPANSION WIRES</b>						
	<b>M-Expansion ONE.FIVE Narrow*</b>	.014 × .025 M-Expansion Cu Nitium 27° Narrow Archwire w/stops	Used in a small number of cases for stubborn rotations prior to placing M-Series Expansion TWO wire; 3 dimensional control of wire will begin initial torque control; simultaneously correcting crossbites or enhancing arch development	4-6 weeks	1-2 appointments	103-MEXP1.5N
	<b>M-Expansion ONE.FIVE Wide*</b>	.014 × .025 M-Expansion Cu Nitium 27° Wide Archwire w/stops				103-MEXP1.5W
	<b>M-Expansion TWO.FIVE Narrow*</b>	.019 × .025 M-Expansion Cu Nitium 27° Narrow Archwire w/stops	For final bracket alignment prior to M-THREE BETA wire with ceramic brackets; simultaneously correcting crossbites or enhancing arch development	3-4 weeks	1 appointment	103-MEXP2.5N
	<b>M-Expansion TWO.FIVE Wide*</b>	.019 × .025 M-Expansion Cu Nitium 27° Wide Archwire w/stops				103-MEXP2.5W

M-Series Expansion Wires are packaged in single pouches in packs of 5.

\*The M-Series Expansion Wires are pre-activated to a unique preformed shape. The wires should not be left unsupervised in the patient's mouth for more than six (6) weeks. This may cause overexpansion and/or contraction/underexpansion.

\*\*The clinician may choose to leave the M-Series Expansion Wire in longer based on individual patient response.



The New Movement In Orthodontics™



HenryScheinOrtho.com

Customer Service: 888.851.0533 | In the U.S.: 800.547.2000

Outside the U.S.: +(1) 760.448.8600 | Canada: CERUM 800.661.9567

To email an order: [USASales@HenryScheinOrtho.com](mailto:USASales@HenryScheinOrtho.com)

To email an order from outside the U.S.: [H5OintOrders@HenryScheinOrtho.com](mailto:H5OintOrders@HenryScheinOrtho.com)

Ortho Organizers, Inc. 1822 Aston Ave. Carlsbad, CA 92008-7306 USA

